



**BAYES**  
BUSINESS SCHOOL  
CITY ST GEORGE'S  
UNIVERSITY OF LONDON

# Studying at Bayes Guide for parents and guardians

[ Always learning ]

[bayes.citystgeorges.ac.uk](http://bayes.citystgeorges.ac.uk)

Choosing the right business school is an important decision that will shape your child's future. At Bayes Business School, we strive to provide our students with the best education and student experience and ensure they are prepared for success in their future careers.

### A WORLD CLASS BUSINESS SCHOOL

Bayes was established in 1966 and is consistently ranked as one of the top business schools in the world. In 2025 it was ranked by the *Financial Times* as the 2<sup>nd</sup> best in London and 6<sup>th</sup> in the UK. Our prestigious accreditations and recognitions attest to our commitment to excellence in education. We are among the small global elite of business schools that hold the gold standard of 'triple crown' accreditation from AACSB, AMBA and EQUIS.

Bayes is known for world-class education, excellent research and a deep engagement with industry. Our approach is to balance theory and practice in our teaching. Students tailor learning towards their individual ambitions and career aspirations, while learning in the heart of the City of London.

### SUPPORTING STUDENTS ON THEIR CAREER JOURNEYS

At Bayes, we focus on students' career aspirations. We have designed our courses so that students develop a strong theoretical understanding of their subject, and practical skills that help them solve problems in real-world scenarios.

Some of the most popular industry destinations for our graduates include financial services, consulting, real estate, and shipping. Top employers include organisations such as Accenture, Allianz, Bloomberg, Deloitte, EY, J.P. Morgan, KPMG, Moody's, and PWC. While the majority of students typically find employment in the UK after graduation, countries across Europe and Asia are also popular destinations.

We have a dedicated postgraduate careers team to help students gain skills to make them more employable, with advice on job seeking and applications. The team comprises experienced recruiters and career coaches. Their knowledge of various industries and functions is built through professional experience and ongoing engagement with leading organisations.

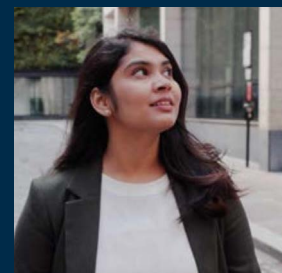
Students participate in events such as the annual Careers Fair and panel discussions to connect with industry specialists. The team also offers 1:1 coaching and advice on topics such as CV crafting and interviewing techniques, as well as workshops to help students develop critical skills like presentation and job search strategies.



"I greatly benefitted from the Bayes careers fair as it put me in direct contact with the representatives of some of the companies I wanted to work with. The careers fair was also an amazing opportunity to get to know the job market and the demand in the sector and the UK as a whole. At the end of it, I had a clear idea of what I need to find my place in the UK consulting industry.

I came to London with a clear goal in my mind putting my trust in Bayes to prepare me for the future that I have planned for myself and Bayes definitely did its part. I am now working in my dream role at Deloitte and I could not be more grateful!"

Deepshika Ganesan  
MSc Management (2022)  
Consulting Analyst  
Deloitte





### LEARNING IN THE HEART OF LONDON

Bayes is in central London, just a short walk from the Bank of England and the headquarters of some of the biggest financial institutions and corporations in the world. Our industry connections provide us with up-to-date insights for both our research and teaching. We hold frequent events featuring influential speakers and alumni, offering valuable networking and employment opportunities for Bayes students.

London, the UK's best student city according to the QS Ranking 2023, offers a wealth of historic landmarks, cultural attractions, diverse cuisine, and exceptional educational opportunities. Our local areas Shoreditch and Clerkenwell are renowned for their history, vibrant fashion, art scenes, bustling markets, and diverse restaurants.

### SAFEGUARDING OUR STUDENTS

London is a vibrant city with robust law enforcement and a strong emphasis on public safety.

Bayes is a safe environment where students can fully engage in their studies. We have a committed security team on duty 24/7 to help our students and a dedicated web platform to provide students with information about the internal and external support available to them.

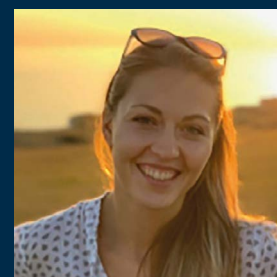
London boasts an excellent public transport system, and our campus is centrally located in Zone 1, a short walk from various tube stations and bus stops. This ensures students can travel safely to and from different locations in London, making it convenient to explore the city or return home after a day's study.



“I very much enjoyed my year at Bayes. In addition to covering all the mandatory courses, I took many interesting electives in the third term to absorb as much knowledge as possible, including learning new practical skills such as Python and VBA.

My job at Mizuho is exactly where I imagined myself to be before I applied to Bayes. I believe that, on top of all the practical knowledge and understanding the global capital markets better, Bayes taught me how to position myself best in a workplace and how to go through interviews and build relationships with people from many different backgrounds. I only wish time had gone slower during my Master's Programme so I could have enjoyed it a little longer!”

**Iryna Vushko**  
**MSc Finance (2019)**  
 Corporate Finance Associate  
 Mizuho





### A WELCOMING ENVIRONMENT FOR EVERYONE

We understand that for many students, this may be their first time living away from home in a new city or country. Bayes is a welcoming place and we are proud of our diverse community – around 90% of our master’s students come from outside the UK.

We are committed to nurturing an inclusive, diverse, and discrimination-free environment. Diversity, Equity, and Inclusion (DEI) are core to our values. Our DEI Committee, consisting of academics, professional staff, and student representatives, actively promotes the DEI agenda. They conduct workshops for all Bayes students, focusing on inclusive teamwork to cultivate a welcoming environment for everyone.

In line with our commitment to inclusivity, our multi-faith chaplaincy team and student faith societies work together to establish a safe and inviting space for those of all beliefs on campus. They provide dedicated areas for prayer and reflection, as well as offering general spiritual and faith-specific support.

We also offer support with disability, neurodiversity, mental health, and counselling services which are available to all students.

### LIFE OUTSIDE OF LEARNING

Extracurricular activities play a significant role in the Bayes student experience. We offer a variety of industry-related clubs and societies,

providing incredible opportunities for networking, socialising, and developing employability skills. The friendships formed within these groups often grow into lifelong networks.

Students at Bayes also have full access to a range of recreational facilities, including playing fields in North London for field sports and the nearby CitySport facility for indoor sports and gym facilities.

### SUPPORTING OUR STUDENTS

Students benefit from a range of support services helping them to thrive academically, socially, and personally throughout their time with us. For example, our Academic Skills Team helps students learn more effectively and boost their performance through workshop and tutorials. We provide English for Academic Purposes which offers writing and English language support for international students and those whose first language is not English, through one-to-one meetings or courses, free of charge.

We also offer guidance on visa and immigration matters, accommodation assistance, hospital and GP registrations and counselling on health and student wellbeing.

The Students’ Union also provides support, representation, facilities, services, entertainment, and activities for all students. We tailor our services to diverse needs, helping students to manage their wellbeing and reach their academic potential.



“Before entering the job market, I wanted to gain specialist knowledge relevant to my desired career path. Upon thorough research online and further discussion with mentors, the MSc Banking and International Finance stood out among a number of excellent alternatives in the UK and around the world – I felt that Bayes was somewhere I could continue to be challenged and develop.

My experience has been phenomenal! I have not only gained the specialist knowledge I sought, but also the confidence to execute in practical applications.”

**Wyatt Himmer**  
MSc Banking and  
International Finance (2020)  
Executive  
Financial Advisory  
Mazars



### FINDING ACCOMMODATION

Bayes master's students are eligible to apply for postgraduate accommodation once they have accepted their offer and paid the deposit. Our dedicated accommodation team can advise on options including halls of residence and private rental accommodation.

The cost of the halls of residence typically includes utilities such as heating, lighting and hot water. The postgraduate halls of residence and their related costs can be found [here](#).

Average living costs in London can be difficult to predict, as every student will have different priorities and lifestyle choices, however we have provided a guide that can help [here](#).

### SCHOLARSHIPS AND FUNDING YOUR CHILD'S PLACE

Bayes offers a range of scholarships which are often awarded in recognition of previous outstanding academic achievements and a strong course application. However financial need can also be a factor. More information on the range of scholarships available can be found [here](#).

Loans and other funding opportunities are also available to help cover the cost of postgraduate master's study. Planning how studies will be funded is important and we highly recommend that offer-holders arrange their funding (or find alternative sources of funding in case their scholarship or loan application is not successful) before paying their deposit.

**Our alumni network is made up of nearly 60,000 graduates. Many are leaders in their fields, making waves in industries worldwide. After graduating from Bayes your child will benefit from a powerful network of mentors, and industry connections.**



## Bayes Business School (formerly Cass)


106 Bunhill Row


London EC1Y 8TZ

T: +44 (0)20 7040 0286


bayes.citystgeorges.ac.uk

 BayesBusinessSchoolOfficial

 Bayes-Business-School

 @BayesBSchool

 BayesBSchool

 @BayesBSchool



All the information contained within this brochure was correct at the time of going to print.

City St George's, University of London is an independent member of the University of London which was established by Royal Charter in 1836. It consists of 17 independent member institutions of outstanding global reputation and several prestigious central academic bodies and activities.



**UNIVERSITY  
OF LONDON**